



Au-delà du CGH :
Les nouveautés d'Enzo pour la
Cytogénétique

Journée AchroPuce
17/11/21



Rosaria Esposito, PhD | Application Scientist

Genomics & Molecular Biology Portfolio

From single-gene analysis to entire genome queries

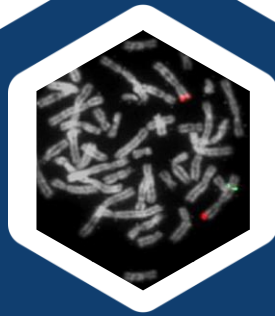


Microarray labeling

CYTAG® CGH Labeling Kit

CYTAG® TotalCGH Labeling Kit

CYTAG® SuperCGH Labeling Kit



ISH and FISH

Labeling and detection systems

Modified Nucleotides

FISH probes

In Situ Virus Detection



PCR and qPCR

AMPIGENE® PCR and qPCR Solutions

AMPIPROBE® Nucleic Acid Detection

CYGREEN® Nucleic Acid Dye



NGS library preparation

AMPINEXT™ Library preparation Kits

AMPIXTRACT™ and EPIXTRACT® Extraction Kits

Complete solutions for aCGH DNA labeling

- Efficient DNA Labeling for accurate data, even with challenging samples

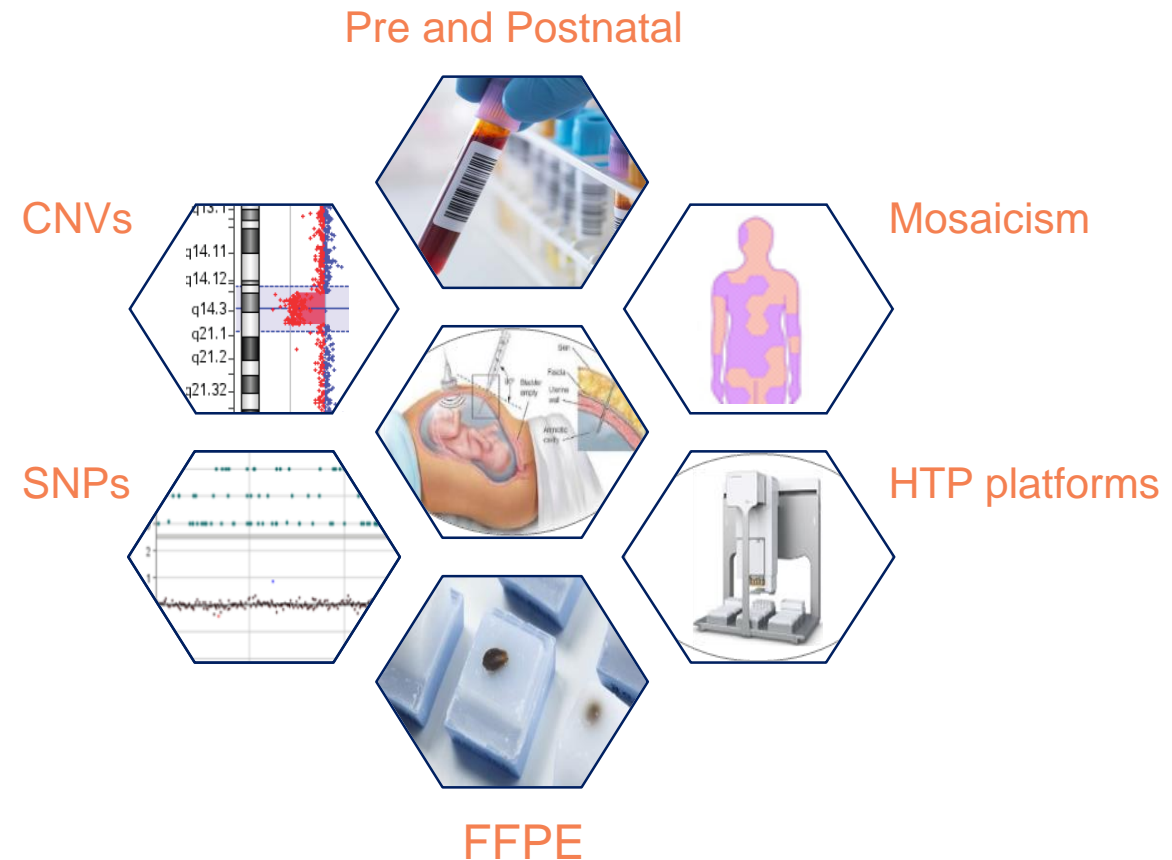


Microarray labeling

CYTAG® CGH Labeling Kit

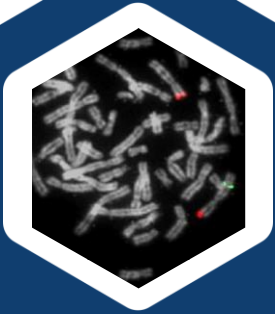
CYTAG® TotalCGH Labeling Kit

CYTAG® SuperCGH Labeling Kit



Fluorescence *in situ* Hybridization

- Make your own probes



ISH and FISH

Labeling and detection systems

Modified Nucleotides

FISH probes

In Situ Virus Detection

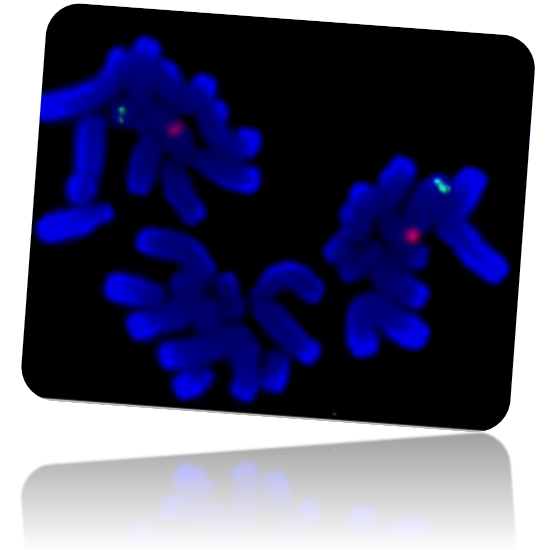
➤ Nick Translation Labeling kit 2.0

- Ready-to-use mix
- Short Labeling time (1 hour)

➤ Fluorescent Labeled dUTPs

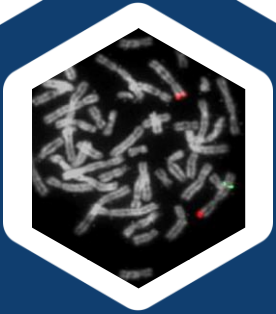
- 10 distinct colors enabling multiplexing

SEEBRIGHT® Aqua 431 dUTP
SEEBRIGHT® Green 496 dUTP
SEEBRIGHT® Green 500 dUTP
SEEBRIGHT® Gold 525 dUTP
SEEBRIGHT® Gold 550 dUTP
SEEBRIGHT® Orange 552 dUTP
SEEBRIGHT® Red 580 dUTP
SEEBRIGHT® Red 598 dUTP
SEEBRIGHT® Red 650 dUTP
SEEBRIGHT® Far-Red 673 dUTP



Fluorescence *in situ* Hybridization

- Make your own probes
- Ready-to-use probes



ISH and FISH

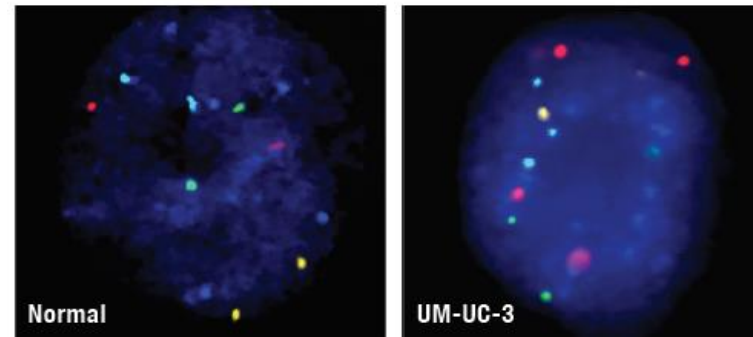
Labeling and detection systems

Modified Nucleotides

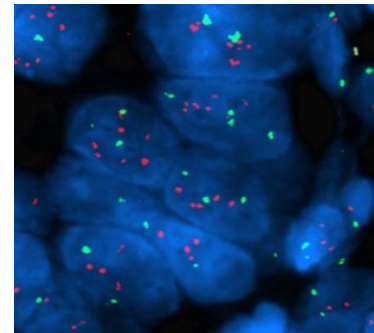
FISH probes

In Situ Virus Detection

➤ DEEPSEE® CDKN2A/CEN3/7/17 Quad probe assay



➤ HER2/CEN17 dual color FISH probe



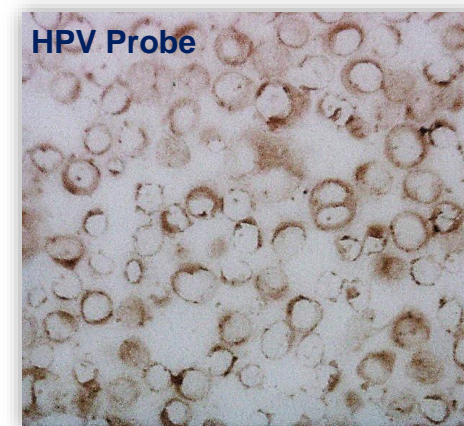
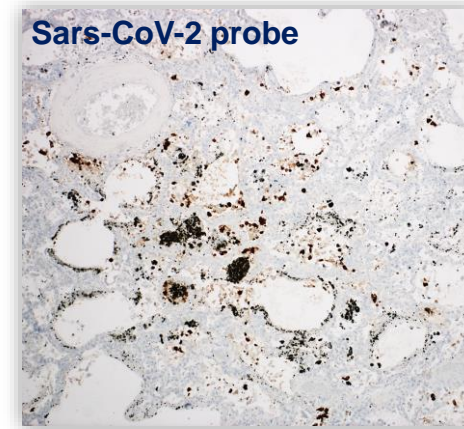
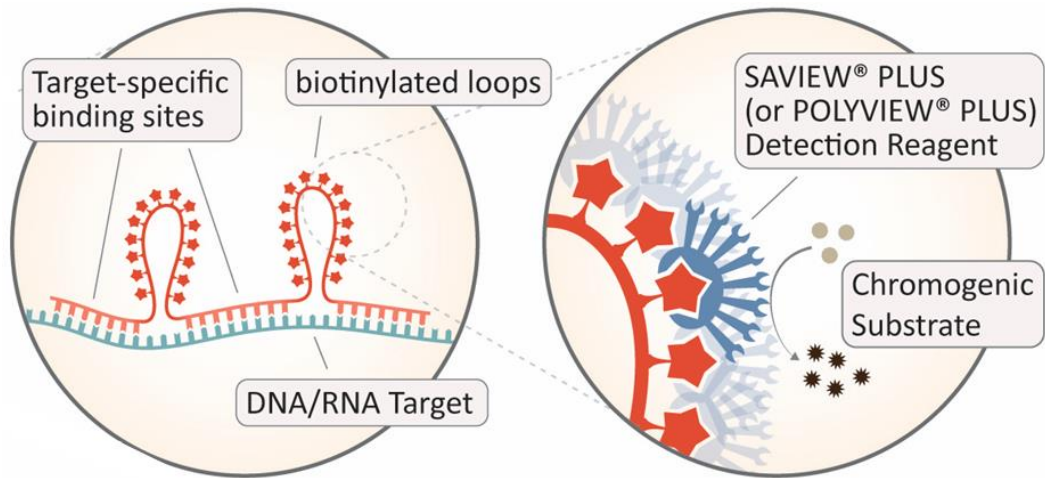
Work in Progress

AMPIVIEW[®] RNA probes

Highly sensitive and specific probes for the detection of DNA and RNA in cells and tissue

Work in Progress

- Detection of unique targets (DNA/RNA) at a single cell level.
- Preserving tissue morphology with short and flexible workflows.
- Design flexibility.



Her2 probe



Merci pour
votre attention !

